

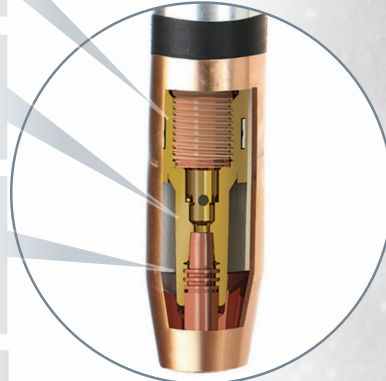
VIRTUALLY INDESTRUCTIBLE**SPECS****Inner Armor**

Protective inner armor – a brass alloy insert – guards against wear and extends nozzle life.

The cool-running Lightning[®] tapered-seat contact tip is designed to dissipate heat quickly through increased surface area, and maximize electrical conductivity.

Dual start-point threads allow re-seating of the tip when wire wear begins to affect performance. Just rotate the tip counter-clockwise 180° to a new wear-point and double the life of the contact tip.

Insulated aircraft aluminum protects the 650 AMP capacity gooseneck.

**Hard Body**

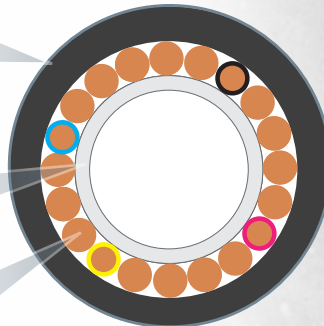
Lifetime Warranty on gun body. Fiber reinforced resin stands up to extreme heat and impact. Slim compact design. Lifetime Warranty on gun body.

**Defensive Shield**

The secret behind Lightning[®]'s super tough cable is electron-beam accelerators that modify and strengthen the outer cover. This protective shield guards against tearing, stretching and abrasion.

Inner tubing, made of Hytrel[®],* is kink and impact resistant for smooth and reliable wire feed.

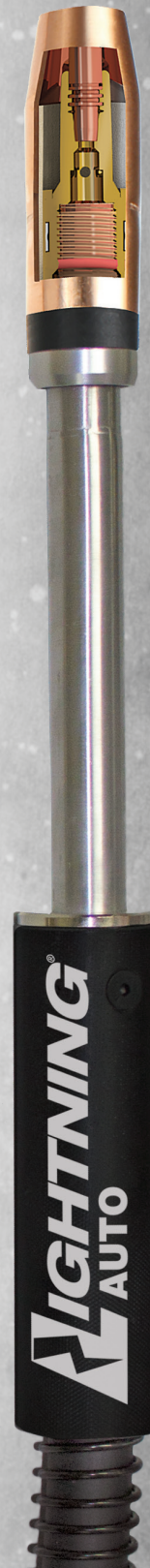
Copper strand-count and gauge is optimized for each cable's amperage rating, resulting in a perfect blend of flexibility and strength.

**Plug-and-Play**

Lightning[®] is ready to work right out of the box with most popular welding systems. Components are designed for quick, easy switch-outs.



*Hytrel[®] is manufactured by DuPont[™] and is a trademark of DuPont. American Torch Tip Company is in no way affiliated with DuPont.



Type
Automatic/
Machine
Air-cooled

Amperage
500

Cable Length
4' – 15', plus
custom lengths

Gooseneck
180°, 22°, 45°, 60°

Wire Size
.030 – .052
1/16" – 5/64"

Compatibility
Compatible with a
complete range of
welding machines
and wire feeders

More information, contact tips, nozzles, and gun part numbers – page 2

Lightning® AUTO MIG Torch



Lightning® Nozzle Selector Chart (slip-on)

Standard Duty Nozzle Part #	Bore/Material	O.D. / Length	Tip Location
63-2138	3/8" Copper	.938" / 2.75"	Flush
64-2950	1/2" Brass	.938" / 2.63"	1/8" Stick out
63-2950B	1/2" Brass	.938" / 2.88"	1/8" Recess
63-2150	1/2" Copper	.938" / 2.88"	1/8" Recess
63-2762	5/8" Copper	.938" / 2.51"	1/4" Stick out
63-2662	5/8" Copper	.938" / 2.63"	1/8" Stick out
63-2162	5/8" Copper	.938" / 2.88"	1/8" Recess
63-2175	3/4" Copper	.938" / 2.88"	1/8" Recess
Heavy Duty Nozzle Part #	Bore/Material	O.D. / Length	Tip Location
65-2550	1/2" Copper	1.062" / 2.88"	1/8" Recess
65-2662	5/8" Copper	1.062" / 2.63"	1/8" Stick out
65-2362	5/8" Brass	1.062" / 2.63"	1/8" Stick out
64-2962	5/8" Copper	1.062" / 2.75"	Flush
65-2862	5/8" Brass	1.062" / 2.75"	Flush
63-2362	5/8" Brass	1.062" / 2.88"	1/8" Recess
65-2562	5/8" Copper	1.062" / 2.88"	1/8" Recess
64-2562	5/8" Copper	1.062" / 3.00"	1/4" Recess
65-2575	3/4" Copper	1.062" / 2.88"	1/8" Recess
65-2375	3/4" Brass	1.062" / 2.88"	1/8" Recess
64-2575	3/4" Copper	1.062" / 3.00"	1/4" Recess
64-2387	7/8" Brass	1.062" / 3.00"	1/4" Recess
65-2562-T *	5/8" Copper	1.062" / 2.78"	1/8" Tip Recess

* Threaded versions available for all nozzles - add "T" to part #

Amperage Ratings (duty cycle)

100% Duty Cycle		60% Duty Cycle	
Co2	Mixed Gas	Co2	Mixed Gas
500 amps	350 amps	650 amps	500 amps

If you don't see what you're looking for,
please call us at 800-342-8477.

Mig Gun Part Numbering System

LIGHTNING HANDLE	POWER PIN	GUN MODEL	CABLE LENGTH	WIRE SIZE	GOOSENECK (OPT)
L - Lightning Auto	M - Miller	53 - 500 amp	03 3 feet	30 .030"	500 180°
	LN - Lincoln		3.5 3.5 feet	35 .035"	522 22°
	E - Euro		04 4 feet	40 .040"	545 45°
	T - Tweco		06 6 feet	45 .045"	560 60°
	5T - Tweco #5		08 8 feet	52 .052"	
	P - Panasonic		10 10 feet	116 1/16"	
	B - Bernard		12 12 feet	332 3/32"	
	H - Hitachi		15 15 feet	364 3/64" al	
				564 5/64"	
L	T	53	15	30	560

Lightning® Contact Tips

Part #	Contact Tip - Size
63-1130	Contact Tip HD .030 pk 10
63-1135	Contact Tip HD .035 pk 10
63-1135-40	Contact Tip HD .035 / .040 I.D. pk 10
63-1138	Contact Tip .030 Pk 10 Robotic
63-1140	Contact Tip HD .040 pk 10
63-1145	Contact Tip HD .045 pk 10
63-1147	Contact Tip HD 3/64" al pk 10
63-1152	Contact Tip HD .052 pk 10
63-1162	Contact Tip HD 1/16" pk 10
63-1168	Contact Tip HD .068 / .078 I.D. pk 10
63-1172	Contact Tip HD .072 pk 10 SPECIAL
63-1178	Contact Tip HD 5/64" pk 10
63-1193	Contact Tip HD 3/32" pk 10
Part #	Tapered Tip - Size
63-12XX	XX = use suffix from chart above
Part #	Heavy Duty Tip - Size
63-13XX	XX = use suffix from chart above
Part #	Extra Heavy Duty Tip - Size
65-11XX **	XX = use suffix from chart above

Lightning Retaining Heads / Diffusers

Part #	Description
65-3103 **	Retaining Head for Extra Heavy Duty
63-3104	Nozzle Retainer (25)
63-3103	Retaining Head
63-3103-2	Retaining Head
63-3116	Thread-on Retaining Head HD
63-3402	Retaining Ring
63-3301	O-ring Orange 016

** These components must be used together

Lightning® Goosenecks

Part #	Size
65-5100A Fixed	180°
65-5122A Fixed	22°
65-5145A Fixed	45°
65-5160A Fixed	60°