

**AMERICAN
TORCH TIP** **ATTC**[®]

CREATING A BETTER
EXPERIENCE



PHDTM



High Density
PLASMA

TORCHES & CONSUMABLES

AMERICAN TORCH TIP[®]
6212 29th Street East, Bradenton, FL
941-753-7557
Sales@attcusa.com
AmericanTorchTip.com



50 - 260 AMP TORCH KITS

Part #	Amp	Power Supply	Plasma Gas	Shield Gas	Material	Notes
60-9951	260	260	O ₂	Air	Mild Steel	
60-9952	200	260	O ₂	Air	Mild Steel	
60-9953	130	260	O ₂	Air	Mild Steel	
60-9954	80	260	O ₂	Air	Mild Steel	
60-9905	50	260	O ₂	Air	Mild Steel	
60-9907	260	260	O ₂	Air	Mild Steel	Bevel
60-9910	130	260	O ₂	Air	Mild Steel	Bevel

PLASMA HIGH DENSITY

LOWER OPERATING COSTS

- Bevel less than 2°
- Minimal dross

LIFETIME WARRANTY

- The best torch warranty in the industry

MADE IN THE USA

- Engineered to stringent tolerances

QUALITY CHECKED

- All consumables are tested for dimensional accuracy



Qty	Parts
1	Torch Body
10	Electrodes
10	Nozzles
2	Swirl Rings
1	Nozzle Retaining Cap
2	Shields
1	Shield Cap
1	Consumables Removal Tool
1	Water Tube Removal Tool
1	1/4 oz. Silicon Lubricant
1	O-ring Kit

CLEANCUT™ TECHNOLOGY

Upgrade Your Consumables

CleanCut™'s patented nozzle and electrode allow your consumables to run longer and cut cleaner making for less downtime and post grind clean-up.

Learn more at:
AmericanTorchTip.com/cleancut

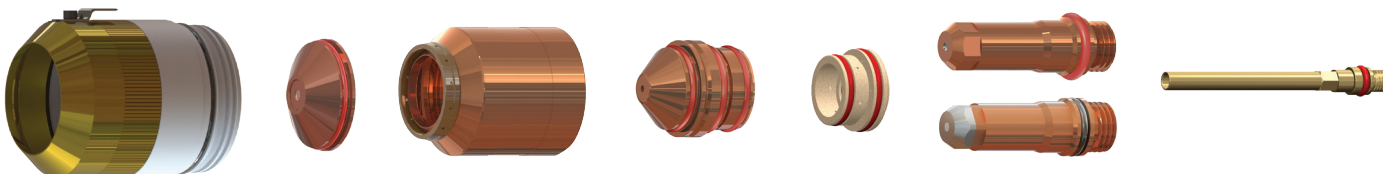


30 - 260 AMP CONSUMABLES



260 amp Mild Steel consumables illustrated above

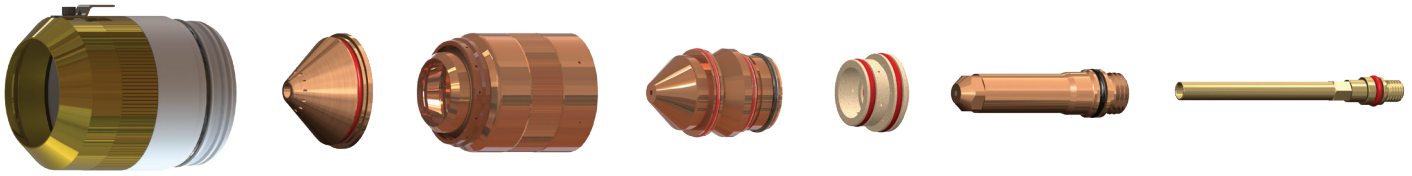
Mild Steel							
Amps	Shield Cap	Shield	Nozzle Retaining Cap	Nozzle	Swirl Ring	Electrode	Water Tube
30 A	60-0173	60-0194	60-0313	220193*	60-0180	60-0192	60-0340
50 A	60-0173	60-0555	60-0313	60-0554	60-0553	60-0552	60-0340
80 A	60-0173	60-0189	60-0176	60-0188	60-0179	60-0187 60-0566 (CleanCut [™])	60-0340
130 A	60-0173	60-0183	60-0176	60-0182	60-0179	60-0181 60-0665 (CleanCut [™])	60-0340
200 A	60-0398	60-0356	60-0355	60-0354	60-0353	60-0352 60-0666 (CleanCut [™])	60-0340
260 A	60-0398	60-0440	60-0433	60-0439	60-0436	60-0435 60-0668 (CleanCut [™])	60-0340
130 A bevel	60-0398	60-0545	60-0603	60-0646	60-0179	60-0649	60-0571
260 A bevel	60-0398	60-0545	60-0603	60-0542	60-0436	60-0541	60-0700



260 amp Stainless Steel consumables illustrated above

Stainless Steel							
Amps	Shield Cap	Shield	Nozzle Retaining Cap	Nozzle	Swirl Ring	Electrode	Water Tube
45 A	60-0173	60-0202	60-0304	60-0201	60-0180	60-0308	60-0340
80 A	60-0173	60-0338	60-0304	60-0337	60-0179	60-0339	60-0340
130 A	60-0173	60-0198	60-0304 (H35) 60-0176 (N ₂)	60-0197	60-0179	60-0307	60-0340
200 A	60-0398	60-0345	60-0344	60-0343	60-0342	60-0307	60-0340
260 A	60-0398	60-0407	60-0344	60-0406	60-0405	60-0307	60-0340
130 A bevel	60-0398	60-0609	60-0608	60-0656	60-0179	60-0606	60-0571
260 A bevel	60-0398	60-0609	60-0608	60-0607	60-0405	60-0606	60-0571

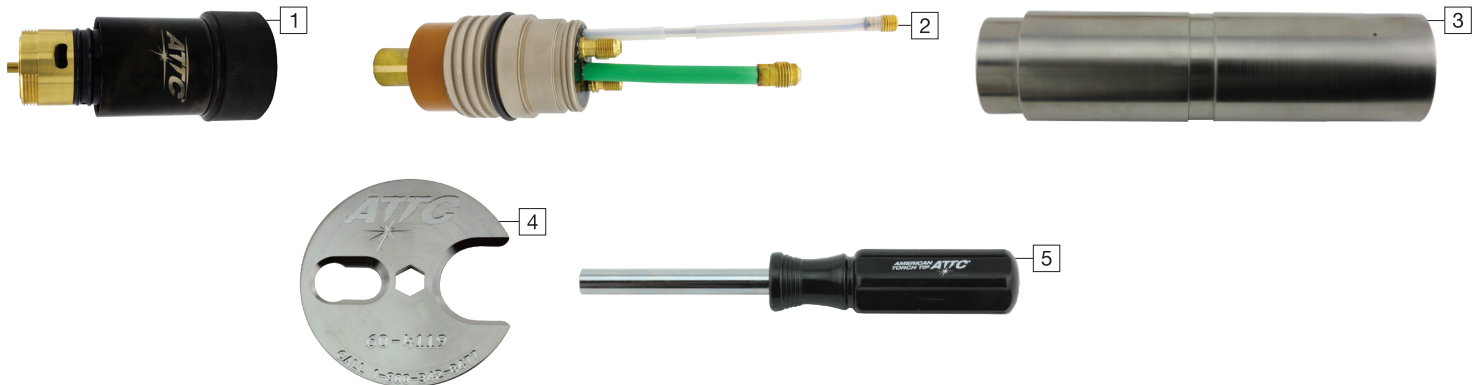
45 - 260 AMP CONSUMABLES



260 amp Aluminum consumables illustrated above

Aluminum							
Amps	Shield Cap	Shield	Nozzle Retaining Cap	Nozzle	Swirl Ring	Electrode	Water Tube
45 A	60-0173	60-0202	60-0176	60-0201	60-0180	60-0308	60-0340
130 A	60-0173	60-0198	60-0304 (H35) 60-0176 (Air)	60-0197	60-0179	60-0307 (H35) 60-0181 (Air)	60-0340
200 A	60-0398	60-0345	60-0347	60-0346	60-0342	60-0307	60-0340
260 A	60-0398	60-0407	60-0344	60-0406	60-0405	60-0307	60-0340

PHD® PARTS & ACCESSORIES



Pos	Part #	Desc
1	60-0162	Torch body
2	60-0163	Quick disconnect receptacle
3	90-0788	Torch mounting sleeve assembly Short 4.5"
	90-0789	Torch mounting sleeve assembly Standard 7"
	90-0790	Torch mounting sleeve assembly Long 9"
4	60-4119	Consumable tool
5	60-0000	Water tube tool
	90-8879	Torch kit: O-rings, Water tube, Seal
	90-8880	Quick disconnect kit: O-ring, Connector

† American Torch Tip Company (ATTC) is a proud US manufacturer of more than 80 years producing products for 6 major cutting and welding technologies. ATTC is in no way affiliated with the above-named original equipment manufacturer(s). References to the above-named manufacturers, tradenames and part numbers are for your convenience only. Most parts advertised for sale are made by or for American Torch Tip and other parts as indicated are original parts manufactured by above-named, original equipment manufacturer (OEM) and are simply being re-sold by American Torch Tip. Footnotes: * = OEM; # = American Torch Tip is licensed to make and sell this part by named manufacturer; ATTC and ATT suffix = This part is an original American Torch Tip design and is not manufactured identical to the OEM design; © indicates a registered trademark, trade name, or product name of the above-named company. PHD™, PHDX™, Lightning®, Waltec™, Integra™, Lasertec® Laser Division of American Torch Tip®, Multi-Use™ and ProMix™ are trademarks owned by American Torch Tip Company. © Copyright 2023, American Torch Tip Company