



PHD[®] 2000



High Density
PLASMA

TORCHES & CONSUMABLES

50 - 200 AMP TORCH KITS

Part #	Amp	Power Supply	Plasma Gas	Shield Gas	Material	Notes
55-9901	200	2000	O ₂	Air	Mild Steel	
55-9903	100-130	2000	O ₂	Air	Mild Steel	
55-9905	50	2000	O ₂	O ₂	Mild Steel	
55-9908	200	2000	O ₂	Air	Mild Steel	
55-9910	100-130	2000	O ₂	Air	Mild Steel	

PLASMA HIGH DENSITY

LOWER OPERATING COSTS

- Bevel less than 2°
- Minimal dross

LIFETIME WARRANTY

- The best torch warranty in the industry

MADE IN THE USA

- Engineered to stringent tolerances

QUALITY CHECKED

- All consumables are tested for dimensional accuracy



Qty	Parts
1	Torch Body
10	Electrodes
10	Nozzles
2	Swirl Rings
1	Nozzle Retaining Cap
2	Shields
1	Shield Cap
1	Consumables Removal Tool
1	Water Tube Removal Tool
1	1/4 oz. Silicon Lubricant
1	O-ring Kit

CLEANCUT™ TECHNOLOGY

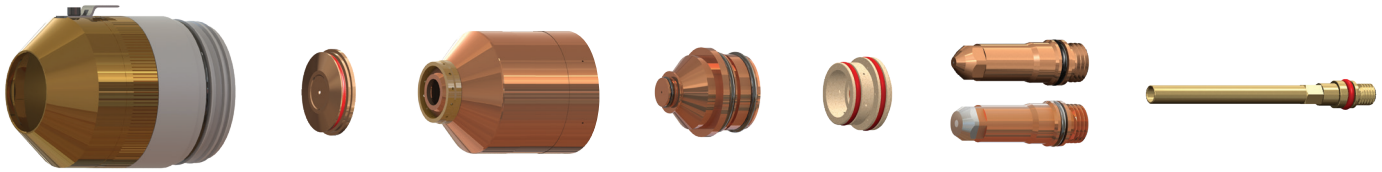
Upgrade Your Consumables

CleanCut™'s patented nozzle and electrode allow your consumables to run longer and cut cleaner making for less downtime and post grind clean-up.

Learn more at:
AmericanTorchTip.com/cleancut



40 - 260 AMP CONSUMABLES



200 amp Mild Steel consumables illustrated above

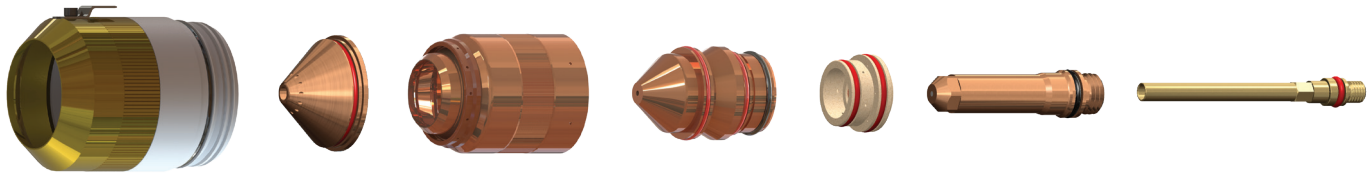
Mild Steel							
Amps	Shield Cap	Shield	Nozzle Retaining Cap	Nozzle	Swirl Ring	Electrode	Water Tube
50 A	55-0173	55-0555	55-0313	55-0554	55-0553	55-0552	60-0340
100 A	55-0173	55-0983	55-0176	55-0510	55-0179	55-0181 55-0665 (CleanCut™)	60-0340
200 A	55-0398	55-0440	55-0433	55-0439 (2000) 55-0200 (200)	55-0436	55-0435	60-0340
130 A bevel	55-0398	55-0645	55-0603	55-0646	55-0179	55-0649	60-0700
260 A bevel	55-0998	55-0545	55-0603	55-0542	55-0436	55-0541	60-0571



200 amp Stainless Steel consumables illustrated above

Stainless Steel							
Amps	Shield Cap	Shield	Nozzle Retaining Cap	Nozzle	Swirl Ring	Electrode	Water Tube
40 A	55-0173	55-0202	55-0304	55-0901	55-0180	55-0308	60-0340
100 A	55-0173	55-0198	55-0176	55-0197	55-0179	55-0307	60-0340
200 A	55-0398	55-0407	55-0344	55-0406	55-0405	55-0307	60-0340
130 A bevel	55-0398	55-0609	55-0608	55-0656	55-0179	55-0606	60-0571
200 A bevel	55-0998	55-0609	55-0608	55-0607	55-0405	55-0606	60-0571

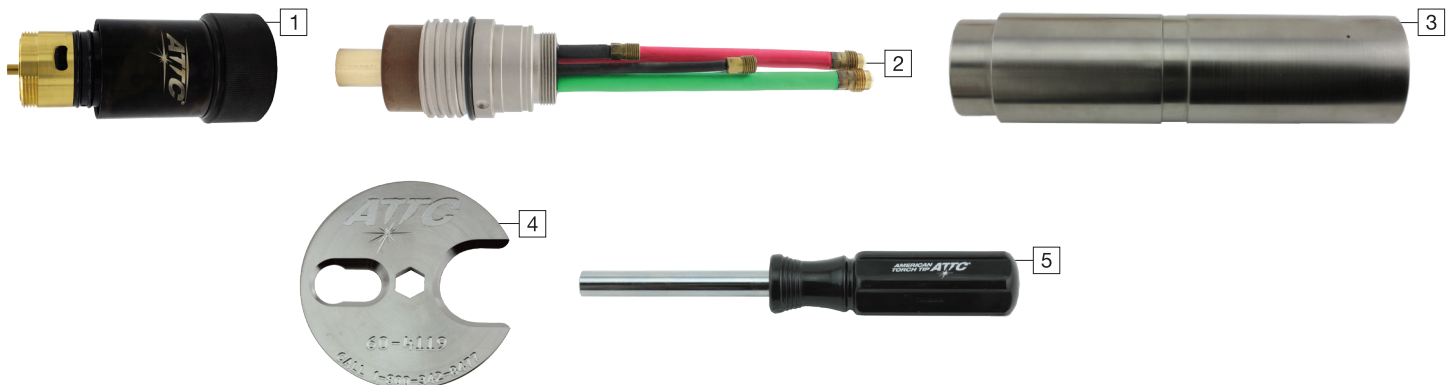
40 - 200 AMP CONSUMABLES



200 amp Aluminum consumables illustrated above

Aluminum							
Amps	Shield Cap	Shield	Nozzle Retaining Cap	Nozzle	Swirl Ring	Electrode	Water Tube
40 A	55-0173	55-0202	55-0304	55-0901	55-0180	55-0308	60-0340
100 A	55-0173	55-0198	55-0304 (Air) 55-0176 (H35)	55-0197	55-0179	55-0181 (Air) 55-0307 (H35)	60-0340
200 A	55-0398	55-0440 (Air) 55-0407 (N ₂)	55-0433 (Air) 55-0344 (N ₂)	55-0200 (Air) 55-0406 (N ₂)	55-0436 (Air) 55-0405 (N ₂)	55-0435 (Air) 55-0307 (N ₂)	60-0340

PHD® 2000 PARTS & ACCESSORIES



Pos	Part #	Desc
1	55-0162	Torch body
2	55-0163	Quick disconnect receptacle
3	55-0894	Torch mounting sleeve assembly 2"
	55-0431	Torch mounting sleeve assembly 1-3/4"
4	60-4119	Consumable tool
5	60-0000	Water tube tool
	55-8546	Leads 25' (7.5m) (Other lengths available. Call for information)
	55-8547	Leads 50' (15m) (Other lengths available. Call for information)
		Torch kit: Bullet plugs, O-rings, Water tube, Seal

† American Torch Tip Company (ATTC) is a proud US manufacturer of more than 80 years producing products for 6 major cutting and welding technologies. ATTC is in no way affiliated with the above-named original equipment manufacturer(s). References to the above-named manufacturers, tradenames and part numbers are for your convenience only. Most parts advertised for sale are made by or for American Torch Tip and other parts as indicated are original parts manufactured by above-named, original equipment manufacturer (OEM) and are simply being re-sold by American Torch Tip. Footnotes: * = OEM; # = American Torch Tip is licensed to make and sell this part by named manufacturer; ATTC and ATT suffix = This part is an original American Torch Tip design and is not manufactured identical to the OEM design; © indicates a registered trademark, trade name, or product name of the above-named company. PHD™, PHDX™, Lightning®, Waltec™, Integra™, Lasertec® Laser Division of American Torch Tip®, Multi-Use™ and ProMix™ are trademarks owned by American Torch Tip Company. © Copyright 2023, American Torch Tip Company