

## 816 SERIES PARTS For ALFA Style Torches



### INNOVATIVE DESIGN

New tapered design improves gas flow and reduces turbulence.

### MATERIALS

Precision machined solid brass inner and swaged copper outer.

### IMPROVED CUTS

No-step shoulder means less slag build-up and time spent on secondary clean-up operations.

### FAST PRE-HEAT

### EASY CLEAN

Tapered nozzle and continuous flutes are easier to clean.

### LESS DOWN TIME

Increase your efficiency and productivity by spending less time on consumables replacement.

### MADE IN USA

American Torch Tip has been manufacturing oxy-fuel consumables since 1940.

## CUT QUALITY TEST RESULT



### ATTC 816 SERIES

- Perfect circular hole
- Clean straight edges
- Improved tapered design
- Solid brass insert



### COMPETITOR 716 SERIES

- Shoulder design causes slag build up on edges (grinding required)
- Irregular hole (rework required)

### AMERICAN TORCH TIP®

6212 29th Street East, Bradenton, FL

P: 941-753-7557

E: Sales@attcusa.com

AmericanTorchTip.com

MAR-BRO-OXY-014



# 816 SERIES PARTS

## For ALFA Style Torches

### SPECS

#### TYPE

Cutting Tip Series  
1232 & 1282 ALFA Style

#### DESIGN

Tapered

#### CAPACITY

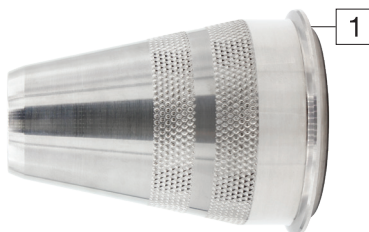
Up to 300mm

#### SIZES

3mm to 300mm

#### GAS SERVICE

Natural Gas/Propane



#### Torch Cap

Pos	Part #	Size	Compatible with
1	816.11301ATT		All

#### Outer Nozzle

Pos	Part #	Size	Compatible with
2	816.16320ATT	3-100mm	Insert sizes 3-100mm
	816.16300ATT	100-300mm	Insert sizes 100-300mm

#### Insert (Tapered)

Pos	Part #	Size	Compatible with
3	816.16321ATT	3-10mm	816.16320 Outer Nozzle
	816.16322ATT	7-15mm	
	816.16323ATT	15-25mm	
	816.16324ATT	25-40mm	
	816.16325ATT	40-60mm	
	816.16326ATT	60-100mm	816.16300 Outer Nozzle
	816.16307ATT	100-200mm	
	816.16308ATT	200-250mm	
	816.16309ATT	250-300mm	